

A close-up photograph of a water tap with water flowing out. The water is clear and bubbly, creating a dynamic stream that falls into a pool of water below, where it creates ripples and bubbles. The background is a soft, light blue gradient.

2021

CONSUMER CONFIDENCE REPORT

CITY OF SAN BENITO

PWS NUMBER: TX0310007

Annual Water Quality Report for the period of January 1st 2021 to December 31st 2021. This report is intended to provide you with important information about your drinking water and the efforts made by the water system to provide safe drinking water.



SAN BENITO
The Resaca City

485 N. Sam Houston
San Benito, Tx 78586

CITY HALL

(956)361-3800

WATER PLANT

(956)361-3840

www.cityofsanbenito.com



2021 CONSUMER CONFIDENCE REPORT

PWS NUMBER: TX0310007

OUR DRINKING WATER IS REGULATED

This report is a summary of the quality of the water we provide to our customers. The analysis was made using the data from the most recent Texas Commission on Environmental Quality (TCEQ) and U.S. Environmental Protection Agency (EPA) required tests and is presented in the attached pages. We hope this information helps you become more knowledgeable about your drinking water supply



ALL DRINKING WATER MAY CONTAIN CONTAMINANTS

When drinking water meets federal standards, there may not be any health benefits to purchasing bottled water or point-of-use devices (such as a faucet filtration system). Drinking water, including bottled water, may reasonably be expected to contain at least small amounts of some contaminants. The presence of these contaminants does not necessarily indicate that water poses a health risk. More information about contaminants and potential health effects can be obtained by calling the EPA's Safe Drinking Water Hotline at **1-800-426-4791**. TCEQ completed an assessment of your source water and results indicate that some of our sources are susceptible to certain contaminants. The sampling requirements for your water system are based on this susceptibility and previous sample data. Any detections of these contaminants may be found in this Consumer Confidence Report.

SECONDARY CONSTITUENTS

Many constituents such as calcium, sodium, or iron, which are often found in drinking water, can cause taste, color, or odor problems. The taste and odor constituents are called secondary constituents and are regulated by the State of Texas. These constituents are not causes for health concern; therefore, secondaries are not required to be reported in this document but they may greatly affect the appearance and taste of your water.

SOURCE OF DRINKING WATER

The sources of drinking water (both tap and bottled water) include rivers, lakes, streams, ponds, reservoirs, springs, and wells. As water travels over the surface of the land or through the ground, it dissolves naturally occurring minerals and, in some cases, radioactive material, and can pick up substances resulting from the presence of animals or from human activity.

Contaminants that may be present in source water include:

Microbial contaminants, such as viruses and bacteria, which may come from sewage treatment plants, septic systems, agricultural livestock operations, and wildlife.

Inorganic contaminants, such as salts and metals, which can be naturally occurring or result from urban storm water runoff, industrial or domestic wastewater discharges, oil and gas production, mining, or farming.

Pesticides and herbicides, which may come from a variety of sources such as agriculture, urban storm water runoff, and residential uses.

Organic chemical contaminants, including synthetic and volatile organic chemicals, which are byproducts or industrial processes and petroleum production, and can also come from gas stations, urban storm water runoff, and septic systems.

Radioactive contaminants, which can be naturally occurring or be the result of oil and gas production and mining activities.



SAN BENITO
The Resaca City

2021 CONSUMER CONFIDENCE REPORT

PWS NUMBER: TX0310007



CRYPTOSPORIDIUM IN DRINKING WATER

Cryptosporidium is a microbial parasite found in surface water throughout the U.S. Although filtration removes *Cryptosporidium*, the most commonly used filtration methods cannot guarantee 100% removal. Current test methods do not allow us to determine if the organisms are dead or if they are capable of causing disease. Symptoms of infection include nausea, diarrhea, and abdominal cramps. Most healthy individuals can overcome the disease within a few weeks. However, immunocompromised people are at greater risk of developing life-threatening illness. We encourage immunocompromised individuals to consult their doctor regarding appropriate precautions to take to avoid infection. *Cryptosporidium* must be ingested to cause disease, and it may spread through other means than drinking water. Additional guidelines on appropriate means to lessen the risk of infection by *Cryptosporidium* are available from EPA's Safe Drinking Water Hotline at **1-800-426-4791**.

REQUIRED ADDITIONAL HEALTH INFORMATION FOR LEAD

If present, elevated levels of lead can cause serious health problems, especially for pregnant women and young children. Lead in drinking water is primarily from materials and components associated with service lines and home plumbing. This water supply is responsible for providing high-quality drinking water but cannot control the variety of materials used in plumbing components. When your water has been sitting for several hours, you can minimize the potential for lead exposure by flushing your tap for 30 seconds to 2 minutes before using water for drinking or cooking. Information on lead in drinking water, testing methods, and steps you can take to minimize exposure is available from the Safe Drinking Water Hotline or at <http://www.epa.gov/safewater/lead>.

USING YOUR METER AS A LEAK DETECTION TOOL

Undetected water leaks can account for 5-15% of total water use for single-family homes and even more for businesses. An undetected leak can waste nearly 500 gallons per month. Finding that leak can be a challenge but well worth stopping the drain on your wallet.

1. Turn off all faucets inside and outside your house.
2. Locate your water meter and check the leak indicator to see if it is moving. The leak indicator could be a small triangular-shaped dial that rotates when water is flowing through the meter. If the dial is moving, chances are, you have a leak.
3. You can also take a meter reading and wait one hour and take another meter reading (make sure NO water is used during this time). If the reading has changed, you have a leak.

If you detect a leak, the next step is to determine if the leak is inside or outside your house

1. Locate your home's main shut-off valve and shut off the water at the valve.
2. Again, check the leak indicator for movement OR use the meter reading method, making sure not to use any water during this period. If the leak indicator stops moving, then you have a leak inside the house. If the leak indicator continues to move or there is a change in the meter readings, then the leak is outside between the meter and the house.



SAN BENITO
The Resaca City

2021 CONSUMER CONFIDENCE REPORT

PWS NUMBER: TX0310007

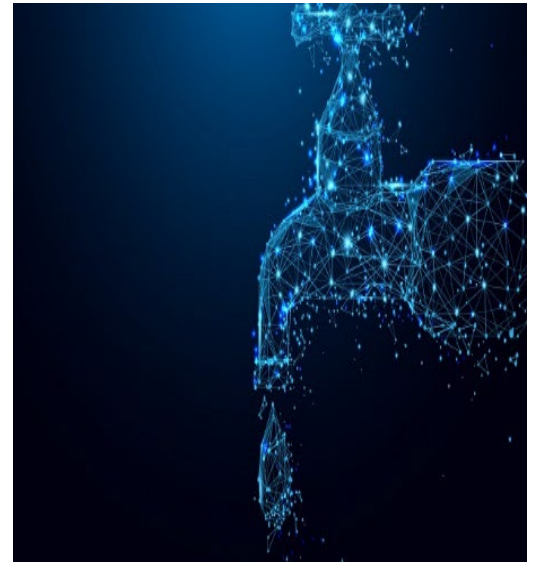


FIGHT F.O.G.

(FATS, OILS, AND GREASE)

KEEP FATS, OILS, AND GREASE OUT OF YOUR DRAIN AND PREVENT CLOGGED PIPES AND SEWER BACK-UPS!

- ✓ Pour cold fats, oils, and grease into a covered, disposable container and throw it into your garbage. Never pour fats, oil or grease down sink drains or toilets.
- ✓ Soak up spilled oils and grease with an absorbent material such as paper towels or kitty litter and throw it into your garbage.
- ✓ Before you wash dishes, scrape food scraps, fats, oils and grease into your garbage
- ✓ Use sink strainers to catch any remaining food waste while washing dishes.

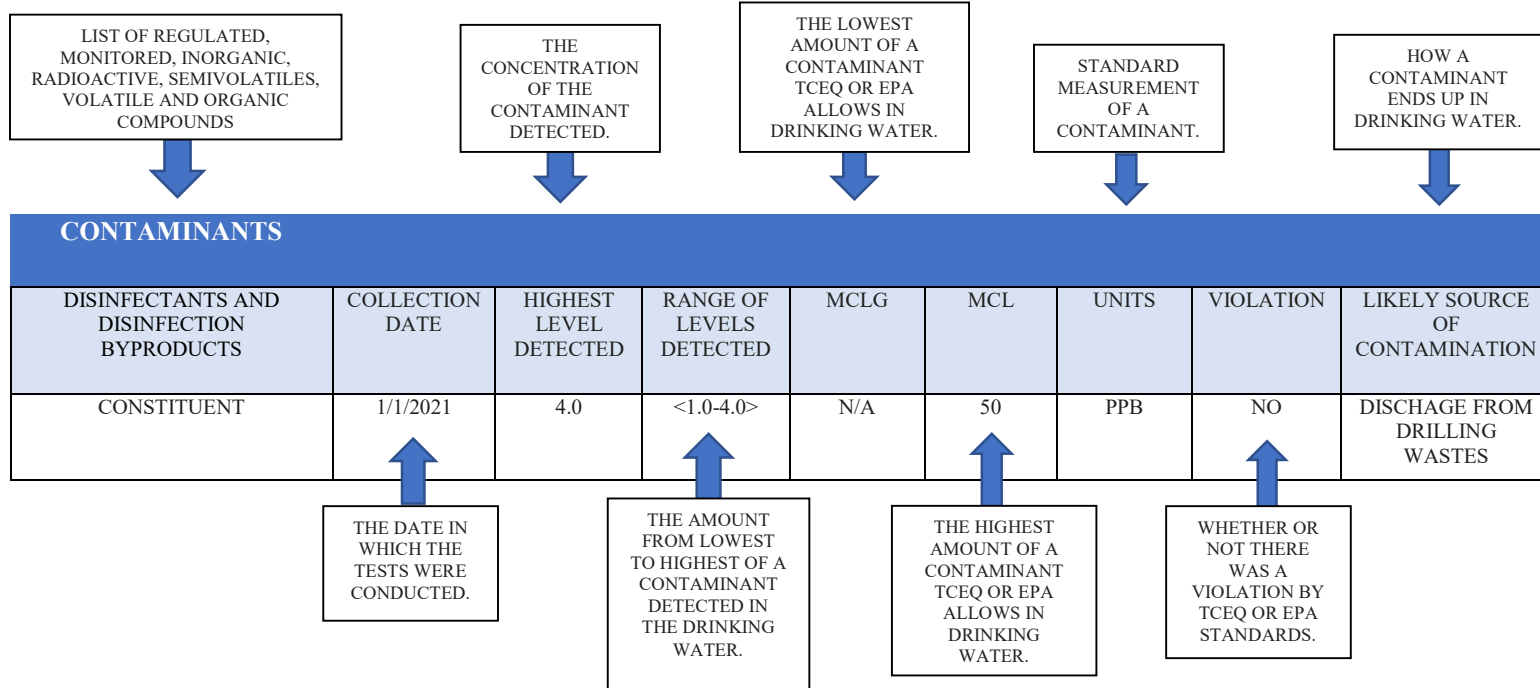


WATER CONSERVATION TIPS

- High-efficiency toilets, water-efficient washing machines, rainwater harvesting systems, and water-efficient landscaping can all help reduce household water demands.
- Water-efficiency showerheads and aerators for faucets can significantly reduce the amount of water you use. In fact, installing a water-efficient showerhead is one of the most effective water saving steps you can take inside your house.
- Leaky faucets and toilets can waste thousands of gallons of water monthly, and they are inexpensive to fix.
- Outdoor water use can account for more than 30% of total home water use. With proper management, you can have a beautiful, healthy landscape and reduce your water use significantly. This can amount to hundreds of dollars in savings a year in water and wastewater costs.



HOW TO READ YOUR WATER QUALITY REPORT



DEFINITIONS AND ABBREVIATIONS

The following contains scientific terms and measures, some of which may require explanation.

- **ACTION LEVEL:** The concentration of a contaminant which, if exceeded, triggers treatment or other requirements which a water system must follow.
- **ACTION LEVEL GOAL (ALG):** The level of a contaminant in drinking water below which there is no known or expected risk to health. ALGs allow for a margin of safety.
- **AVG:** Regulatory compliance with some MCLs are based on running annual of monthly samples.
- **LEVEL 1 ASSESSMENT:** A level 1 assessment is a study of the water system to identify potential problems and determine (if possible) why total coliform bacteria have been found in our water system.
- **LEVEL 2 ASSESSMENT:** A level 2 assessment is a very detailed study of the water system to identify potential problems and determine (if possible) why an E. coli MCL violation has occurred and/or why coliform bacteria have been found in our water system on multiple occasions.
- **MAXIMUM CONTAMINANT LEVEL (MCL):** The highest level of a contaminant that is allowed in drinking water. MCLs are set as close to the MCLGs as feasible using the best available treatment technology.
- **MAXIMUM CONTAMINANT LEVEL GOAL (MCLG):** The level of a contaminant in drinking water below which there is no known or expected risk to health. MCLGs allow for a margin of safety.
- **MAXIMUM RESIDUAL DISINFECTANT LEVEL (MRDL):** The highest level of a disinfectant allowed in drinking water. There is convincing evidence that addition of a disinfectant is necessary for control of microbial contaminants.
- **MAXIMUM RESIDUAL DISINFECTANT LEVEL GOAL (MRDLG):** The level of a drinking water disinfectant below which there is no known or expected risk to health. MRDLGs do not reflect the benefits of the use of disinfectants to control microbial contaminants.
- **MFL:** million fibers per liter (a measure of asbestos)
- **MREM:** millirems per year (a measure of radiation absorbed by the body)
- **NA:** not applicable
- **NTU:** nephelometric turbidity units (a measure of turbidity)
- **PCI/L:** picocuries per liter (a measure of radioactivity)
- **PPB:** micrograms per liter, or parts per billion (one ounce in 7,350,000 gallons of water)
- **PPM:** milligrams per liter, or parts per million (one ounce in 7,350 gallons of water)
- **PPQ:** parts per quadrillion, or picograms per liter (pg/L)
- **PPT:** parts per trillion, or nanograms per liter (ng/L)



SUMMARY

The City of San Benito collects, treats, and distributes water from the local Resaca. As water is collected from the Resaca, several complex treatment steps occur and tests are conducted in order to meet TCEQ standards before the water is distributed to customers.

During calendar year 2021, San Benito water treatment tests were compliant with TCEQ requirements and no water quality violations occurred.

WATER QUALITY REPORT 2021

LEAD AND COPPER RESULTS*

LEAD AND COPPER	DATE SAMPLED	MCLG	ACTION LEVEL (AL)	90 TH PERCENTILE	# SITES OVER AL	UNITS OF MEASUREMENT	VIOLATION	LIKELY SOURCE OF CONTAMINATION
COPPER	2019	1.3	1.3	0.038	0	PPM	N	EROSION OF NATURAL DEPOSITS; LEACHING FROM WOOD PRESERVATIVES; CORROSION OF HOUSEHOLD PLUMBING SYSTEMS.
LEAD	NA							CORROSION OF HOUSEHOLD PLUMBING SYSTEMS; EROSION OF NATURAL DEPOSITS

*ALL LEAD AND COPPER RESULTS ARE FROM THE YEAR OF 2016. NO TESTING WAS REQUIRED DURING THE YEARS OF 2017 AND 2018.

DISINFECTION BY-PRODUCTS

DISINFECTION BY-PRODUCTS	COLLECTION DATE	HIGHEST LEVEL DETECTED	RANGE OF INDIVIDUAL SAMPLES	MCLG	MCL	UNITS OF MEASUREMENTS	VIOLATION	LIKELY SOURCE OF CONTAMINATION
CHLORITE	2021	0.945	0-0.945	0.8	1	PPM	N	BY-PRODUCT OF DRINKING WATER DISINFECTION
HALOACETIC ACIDS (HAAs)	2021	30	4.8-44.3	NO GOAL FOR THE TOTAL	60	PPB	N	BY-PRODUCT OF DRINKING WATER DISINFECTION
TOTAL TRIHALOMETHANES	2021	75	16.8-102	NO GOAL FOR THE TOTAL	80	PPB	N	BY-PRODUCT OF DRINKING WATER DISINFECTION

INORGANIC CONTAMINANTS

CONTAMINANT	COLLECTION DATE	HIGHEST LEVEL DETECTED	RANGE OF INDIVIDUAL SAMPLES	MCLG	MCL	UNITS	VIOLATION	LIKELY SOURCE OF CONTAMINATION
BARIUM	2021	0.126	0.126-0.126	2	2	PPM	N	DISCHARGE OF DRILLING WASTES; DISCHARGE FROM METAL REFINERIES; EROSION OF NATURAL DEPOSITS.
Arsenic	2021	3	3-3	0	10	PPB	N	Erosion of natural deposits: Runoff from orchards; Runoff from glass and electronics production wastes.
CYANIDE	2021	60	0-60	200	200	PPB	N	DISCHARGE FROM PLASTIC AND FERTILIZER FACTORIES; DISCHARGE FROM STEEL/METAL FACTORIES.
FLUORIDE	2021	0.6	0.51-0.61	4	4.0	PPM	N	EROSION OF NATURAL DEPOSITS; WATER ADDITIVE WHICH PROMOTES STRONG TEETH; DISCHARGE FROM FERTILIZER AND ALUMINUM FACTORIES.
NITRATE (MEASURED AS NITROGEN)	2021	1	0.17-0.63	10	10	PPM	N	RUNOFF FROM FERTILIZER USE; LEACHING FROM SEPTIC TANKS, SEWAGE; EROSION OF NATURAL DEPOSITS.
SELENIUM	2021	10	6.1-6.1	50	50	PPB	N	DISCHARGE FROM PETROLEUM AND METAL REFINERIES; EROSION OF NATURAL DEPOSITS; DISCHARGE FROM MINES.

RADIOACTIVE CONTAMINANTS

RADIOACTIVE CONTAMINANTS	COLLECTION DATE	HIGHEST LEVEL DETECTED	RANGE OF INDIVIDUAL SAMPLES	MCLG	MCL	UNITS	VIOLATION	LIKELY SOURCE OF CONTAMINATION
BETA/PHOTON EMITTERS	2021	7.3	7.3-7.3	0	50	PCI/L*	N	DECAY OF NATURAL AND MAN-MADE DEPOSITS.

*EPA considers 50 pCi/L to be the level of concern for beta particles.

Gross alpha excluding radon	2021	2	2-2	0	15	pCi/L	N	Erosion of natural deposits.
Uranium	2021	2	2.1-2.1	0	30	Ug/L	N	Runoff from herbicide used on row crops.

DISINFECTANT RESIDUAL

DISINFECTANT RESIDUALS	YEAR	AVERAGE LEVEL	RANGE OF LEVELS DETECTED	MRDL	MRDLG	UNIT OF MEASURE	VIOLATION	SOURCE IN DRINKING WATER
CHLORAMINES	2021	2.74	2.41-3.43	4	4	PPM	N	WATER ADDITIVE USED TO CONTROL MICROBES.

TURBIDITY

	LEVEL DETECTED	LIMIT (TREATMENT TECHNIQUE)	VIOLATION	LIKELY SOURCE OF CONTAMINATION
HIGHEST SINGLE MEASUREMENT	0.34 NTU	1 NTU	N	SOIL RUNOFF.
LOWEST MONTHLY % MEETING LIMIT	100%	0.3 NTU	N	SOIL RUNOFF.

*Information Statement: Turbidity is a measurement of the cloudiness of the water caused by suspended particles. We monitor it because it is a good indicator of water quality and the effectiveness of our filtration system and disinfectants.

COLIFORM BACTERIA

MAXIMUM CONTAMINANT LEVEL GOAL	TOTAL COLIFORM MAXIMUM CONTAMINANT LEVEL	HIGHEST # OF POSITIVE	FECAL COLIFORM OR E. COLI MAXIMUM CONTAMINANT LEVEL	TOTAL # OF POSITIVE E. COLI OR FECAL COLIFORM SAMPLES	VIOLATION	LIKELY SOURCE OF CONTAMINATION
None						NATURALLY PRESENT IN THE ENVIROMENT.

TOTAL ORGANIC CARBON

The percentage of Total Organic Carbon (TOC) removal was measured each month and the system met all TOC removal requirements set, unless a TOC violation is noted in the violations section.

VIOLATIONS

VIOLATION TYPE	VIOLATION BEGIN	VIOLATION END	VIOLATION EXPLANATION
No Violations			

MONITORING DATA FOR HARLINGEN WATER WORKS 2021

City of San Bento Did not purchase any water in 2021 from Harlingen Water works system